

TOWN OF CAPE ELIZABETH TOWN CENTER STORMWATER MANAGEMENT PLAN UPDATE

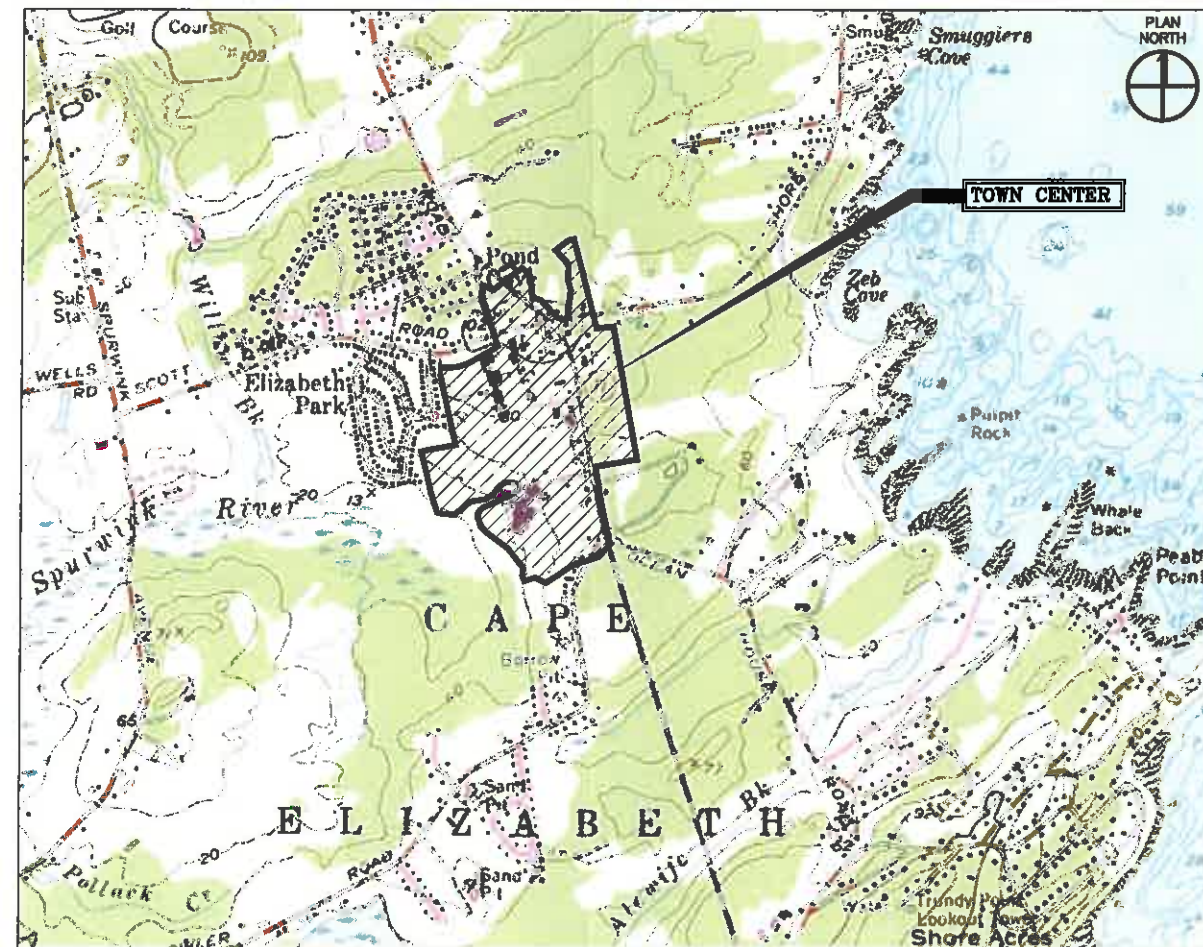
Cape Elizabeth, Maine

Prepared For:
TOWN OF CAPE ELIZABETH

Prepared By:
AMEC FOSTER WHEELER
511 Congress Street
Portland, Maine 04101



511 Congress St., Suite 200, Portland, ME 04101
P: (207) 775-5401 F: (207) 772-4762
www.amecfw.com



LOCATION MAP
SCALE: 1"=1,000'(±)

INDEX OF DRAWINGS

SHEET NO.	DWG. NO.	DRAWING TITLE
1	G-001	TITLE SHEET
2	C-101	CONCEPTUAL STORMWATER DRAINAGE IMPROVEMENT PLAN/WATERSHED MAP
3	C-102	CONCEPTUAL STORMWATER DRAINAGE IMPROVEMENT PLAN/WATERSHED MAP
4	C-301	CONCEPTUAL STORMWATER DRAINAGE IMPROVEMENT DETAILS

CURRENT ISSUE STATUS:
PROJECT: CONCEPTUAL STORMWATER DRAINAGE IMPROVEMENT PLAN/WATERSHED MAP
CAPE ELIZABETH TOWN CENTER

REV	REVISION ISSUE DESCRIPTION	DATE

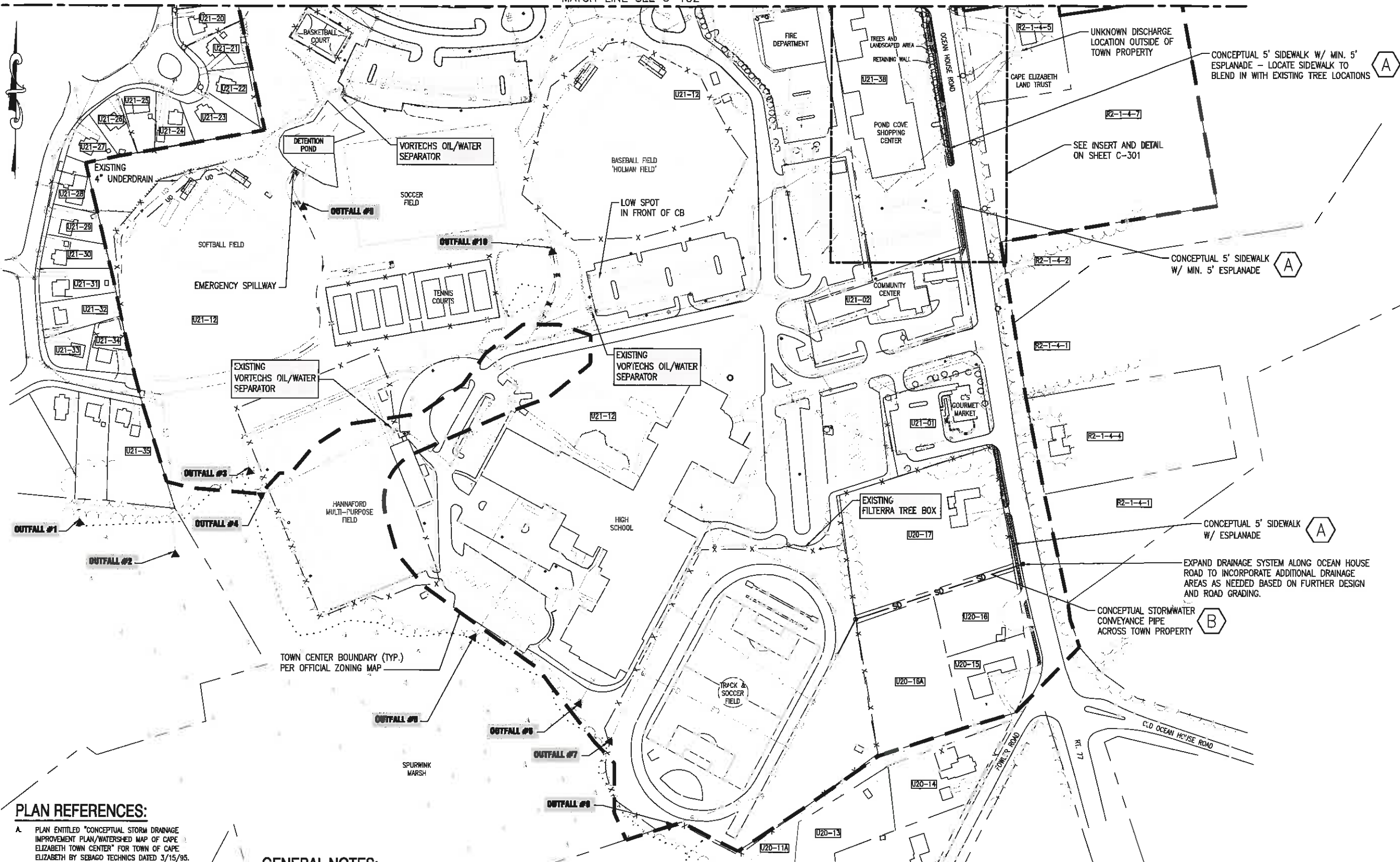
PROJECT NUMBER: 3618146433
PROJECT MANAGER: RBN
A/E OF RECORD: SDH
DRAWN BY: DAB
CAD FILE: G-001
SCALE: NTS

GRAPHIC SCALE:
0" 1"

TITLE:
CONCEPTUAL STORMWATER DRAINAGE IMPROVEMENT PLAN/WATERSHED MAP

DRAWING NO: G-001
SHEET: 1 OF 4

MATCH LINE SEE C-102



PLAN REFERENCES:

- A. PLAN ENTITLED "CONCEPTUAL STORM DRAINAGE IMPROVEMENT PLAN/WATERSHED MAP OF CAPE ELIZABETH TOWN CENTER" FOR TOWN OF CAPE ELIZABETH BY SEBAGO TECHNICS DATED 3/15/95.
- B. PLAN PREPARED BY RICHARD D. MANTHORNE (PLS #853) DATED 9-10-91. INFORMATION PROVIDED ON THIS PLAN OBTAINED FROM CAPE ELIZABETH TAX MAPS, AERIAL PHOTOGRAPHS, AND AVAILABLE PLANS FROM TOWN OF CAPE ELIZABETH.
- C. AERIAL TOPOGRAPHICAL PLAN DATED 1-26-94 PREPARED BY STEVENS, MORTON, ROSE & THOMPSON (S.M.R.T.).
- D. AUTOCAD GRADING/UTILITY PLAN FOR CAPE ELIZABETH MIDDLE SCHOOL EXPANSION PROJECT DATED 2-25-94, LAST REVISION 6-3-94 AS PREPARED BY STEVENS, MORTON, ROSE & THOMPSON, PORTLAND, MAINE.

GENERAL NOTES:

1. EXISTING DRAINAGE AND UTILITY INFORMATION SHOWN WAS COMPILED BASED UPON FIELD REDONNAISSANCE, COMMUNICATIONS WITH CAPE ELIZABETH PUBLIC WORKS DEPARTMENT AND AVAILABLE PLAN INFORMATION.
2. THIS PLAN IS FOR INFORMATIONAL AND PLANNING PURPOSES ONLY. ALL FEATURES SHOULD BE FIELD VERIFIED BY CONTROLLED SURVEY PRIOR TO FINAL DESIGN OR CONSTRUCTION WORK. REFER TO TAX MAPS FOR PROPERTY INFORMATION.
3. ACTUAL PIPE DIAMETERS, MATERIALS AND CONDITIONS SHALL BE CONFIRMED PRIOR TO THE DESIGN OF ANY SYSTEM IMPROVEMENTS OR PRIVATE PROPERTY DEVELOPMENT.

NOTE:
SEE SHEET C-102 FOR LEGEND

NOTE:
SEE SHEET C-301 FOR PROPERTY INFORMATION



511 Congress St., Suite 200, Portland ME 04101
P: (207) 775-5401 F: (207) 772-4762
www.amecfw.com

CURRENT ISSUE STATUS:
PROJECT:
CONCEPTUAL STORM DRAINAGE IMPROVEMENT PLAN/WATERSHED MAP
CAPE ELIZABETH TOWN CENTER

REV.	REVISION ISSUE DESCRIPTION	DATE

PROJECT NUMBER: 3618146433
PROJECT MANAGER: RBN
A/E OF RECORD: SDH
DRAWN BY: DAB
CAD FILE: C-101
SCALE: 1" = 100'
GRAPHIC SCALE:
0" 1"

TITLE:
CONCEPTUAL STORM DRAINAGE IMPROVEMENT PLAN/WATERSHED MAP
DRAWING NO:
C-101
SHEET: 2 OF 4

PLEASE NOTE: THIS DOCUMENT MAY NOT ACCURATELY REPRESENT THE FINAL DOCUMENT. ONLY AN ENGINEER, ARCHITECT OR SURVEYOR LICENSED IN THE STATE OF MAINE CAN BE HELD RESPONSIBLE FOR THE DESIGN OF THIS DOCUMENT.

LEGEND

- TOWN CENTER BOUNDARY
- (H) CONCEPTUAL ID (SEE TOWN CENTER STORMWATER PLAN UPDATE FOR CONCEPT DESCRIPTION)
- CONCEPTUAL AREAS
- (A) NUMBER OF PARKING SPACES (CONCEPTUAL)
- U22-64 PARCEL MAP/LOT
- SD CONCEPTUAL STORM DRAIN
- CONCEPTUAL UNDERDRAIN
- CONCEPTUAL STORMWATER TREATMENT PRACTICE
- CONCEPTUAL SIDEWALK
- CONCEPTUAL PAVEMENT
- CONCEPTUAL BUILDING
- EXISTING STORMWATER TREATMENT PRACTICE
- EXISTING STORM DRAIN
- EXISTING UNDERDRAIN
- EXISTING BUILDING ROOF DRAIN OR UNDERDRAIN
- CATCH BASIN
- STORM DRAIN MANHOLE
- ▲ STORMWATER OUTFALL
- - - EXISTING FENCE LINE
- - - EXISTING VEGETATION LINE
- - - PROPERTY LINE

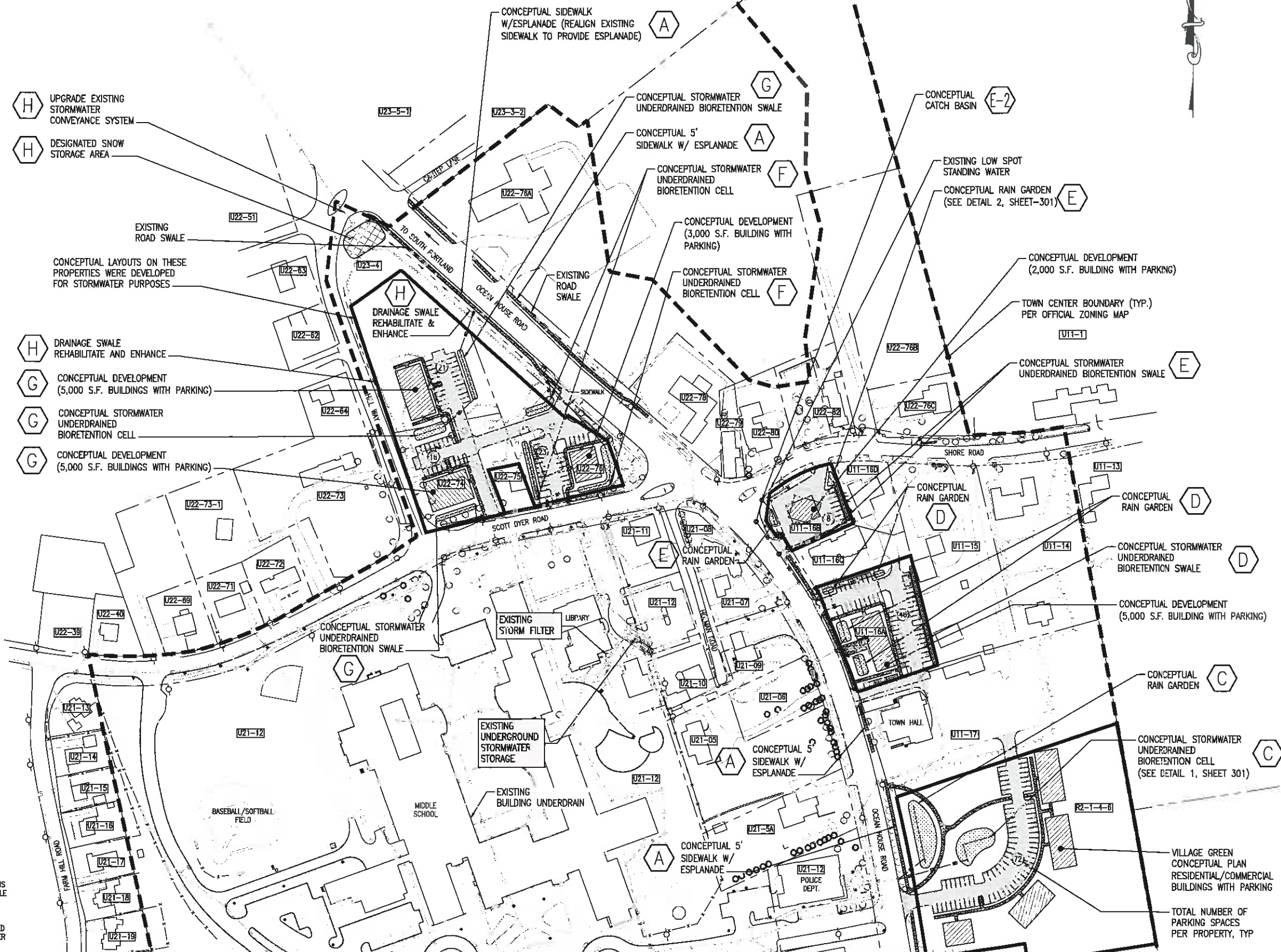
- (H) UPGRADE EXISTING STORMWATER CONVEYANCE SYSTEM
- (H) DESIGNATED SNOW STORAGE AREA
- (H) DRAINAGE SWALE REHABILITATE & ENHANCE
- (G) CONCEPTUAL DEVELOPMENT (5,000 S.F. BUILDINGS WITH PARKING)
- (G) CONCEPTUAL STORMWATER UNDERDRAINED BIORETENTION CELL
- (G) CONCEPTUAL DEVELOPMENT (5,000 S.F. BUILDINGS WITH PARKING)

PLAN REFERENCES:

- A. PLAN ENTITLED "CONCEPTUAL STORM DRAINAGE IMPROVEMENT PLAN/WATERSHED MAP OF CAPE ELIZABETH TOWN CENTER" FOR TOWN OF CAPE ELIZABETH BY SEBAGO TECHNICS DATED 3/15/95.
- B. PLAN PREPARED BY RICHARD D. WINTHORNE (PLS #653) DATED 9-10-91. INFORMATION PROVIDED ON THIS PLAN OBTAINED FROM CAPE ELIZABETH TAX MAPS, AERIAL PHOTOGRAPHS, AND AVAILABLE PLANS FROM TOWN OF CAPE ELIZABETH.
- C. AERIAL TOPOGRAPHICAL PLAN DATED 1-26-94 PREPARED BY STEVENS, MORTON, ROSE & THOMPSON (S.M.R.T.).
- D. AUTOCAD GRADING/UTILITY PLAN FOR CAPE ELIZABETH MIDDLE SCHOOL EXPANSION PROJECT DATED 2-25-94, LAST REVISION 6-3-94 AS PREPARED BY STEVENS, MORTON, ROSE & THOMPSON, PORTLAND, MAINE.

GENERAL NOTES:

1. EXISTING DRAINAGE AND UTILITY INFORMATION SHOWN WAS COMPILED BASED UPON FIELD RECONNAISSANCE, COMMUNICATIONS WITH CAPE ELIZABETH PUBLIC WORKS DEPARTMENT AND AVAILABLE PLAN INFORMATION.
2. THIS PLAN IS FOR INFORMATIONAL AND PLANNING PURPOSES ONLY. ALL FEATURES SHOULD BE FIELD VERIFIED BY CONTROLLED SURVEY PRIOR TO FINAL DESIGN OR CONSTRUCTION WORK. REFER TO TAX MAPS FOR PROPERTY INFORMATION.
3. ACTUAL PIPE DIAMETERS, MATERIALS AND CONDITIONS SHALL BE CONFIRMED PRIOR TO THE DESIGN OF ANY SYSTEM IMPROVEMENTS OR PRIVATE PROPERTY DEVELOPMENT.



MATCH LINE SEE C-101

NOTE: SEE SHEET C-301 FOR PROPERTY INFORMATION



511 Congress St., Suite 200, Portland ME 04101
 P: (207) 775-5401 F: (207) 772-4762
 www.amecfw.com

PROJECT: CONCEPTUAL STORM DRAINAGE IMPROVEMENT PLAN/WATERSHED MAP
 CAPE ELIZABETH TOWN CENTER

REV	REVISION	DATE

PROJECT NUMBER: 3818148433
 PROJECT MANAGER: RBN
 A/E OF RECORD: SDH
 DRAWN BY: DAB
 CAD FILE: C-102
 SCALE: 1" = 100'
 GRAPHIC SCALE:
 0' 10' 20'
 TITLE: CONCEPTUAL STORMWATER DRAINAGE IMPROVEMENT PLAN/WATERSHED MAP
 DRAWING NO: C-102
 SHEET: 3 OF 4

PLEASE NOTE: THIS DOCUMENT MAY NOT BE REPRODUCED OR TRANSMITTED IN ANY FORM OR BY ANY MEANS, ELECTRONIC OR MECHANICAL, INCLUDING PHOTOCOPYING, RECORDING, OR BY ANY INFORMATION STORAGE AND RETRIEVAL SYSTEM, WITHOUT THE WRITTEN PERMISSION OF AMEC FOSTER WHEELER.

